

107 GRAND STREET

SOUTHEAST CORNER OF GRAND & MERCER STREETS



URBAN
STONE
REALTY

107 GRAND STREET

Ground Level.....7,325 sf
Lower Level.....1,917 sf
Corner Frontage.....133'
63' on Grand & 70' on Mercer
Ceilings..15' Ground,10' Lower
Possession.....Summer 2016
Term.....10 Years
Asking Rent.....Inquire

POSSIBLE DIVISIONS

INLINE SPACE

Ground Level.....2,025 sf
Lower Level.....502 sf
Frontage....33' on Grand Street

CORNER SPACE

Ground Level.....5,300 sf
Lower Level.....1,415 sf
Corner Frontage..30' on Grand
Street and 70' on Mercer Street



Neighboring Retailers:

Alexander Wang • Vivienne Tam • Nikelab • 3x1
• Agnès B. • Muji • CB2 • Zadig & Voltaire •
Suitsupply • Maison Martin Margiela • Fjällräven
• Vans • James Perse • IRO • Kate Spade

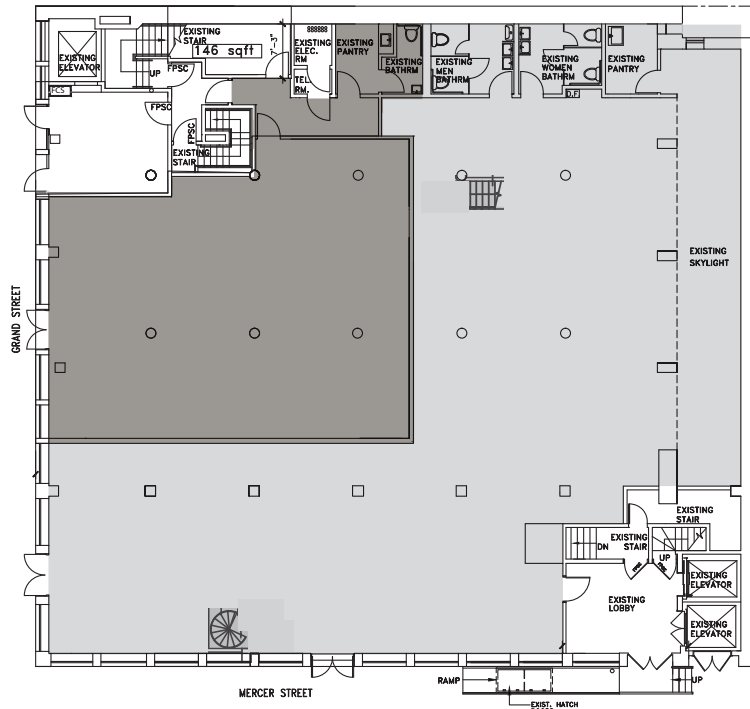
Space Features:

3 signage flags • 3 separate
entrances • Wraparound frontage
• 60' of skylights at rear •
Additional storage space possible

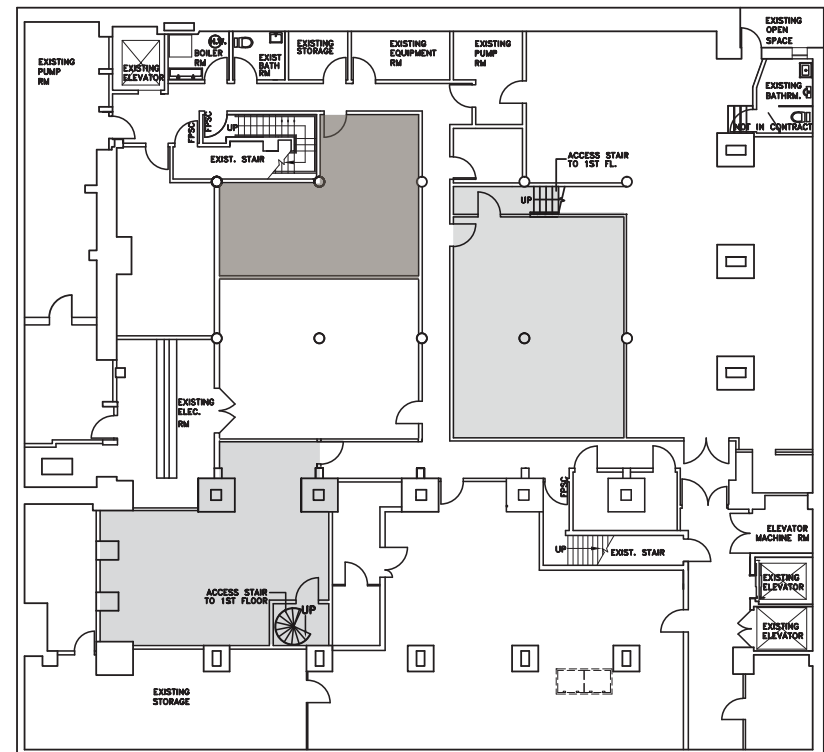
107 GRAND STREET

*Proposed Divisions

GROUND LEVEL



LOWER LEVEL



 - Inline Space

 - Corner Space



107 GRAND STREET

DETAILS
& INQUIRIES:

JEFFREY YUAN

917.416.5209

Urbanstonerealty@gmail.com



URBAN
STONE
REALTY